

340F

Hydraulic Excavator



Engine

Engine Model	Cat® C9.3 ACERT™
Power – ISO 9249 (metric)	228 kW (310 PS)
Power – ISO 14396 (metric)	234 kW (318 PS)

Drive

Maximum Travel Speed	4.8 km/h
Maximum Drawbar Pull	291 kN

Weights

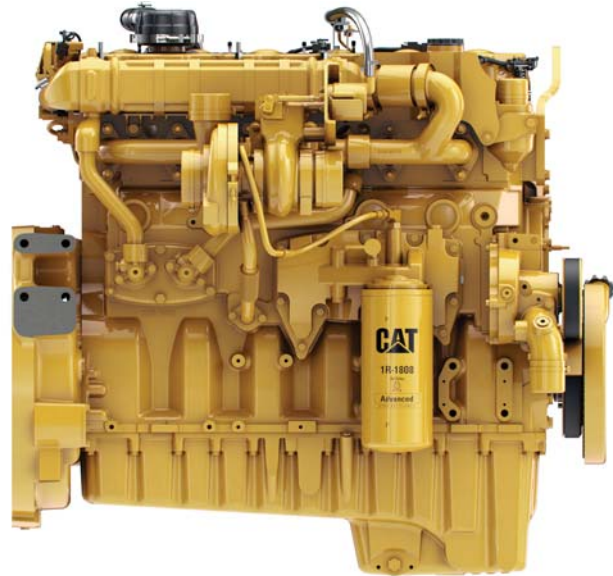
Minimum Weight	40 100 kg
Maximum Weight	42 800 kg

The 340F is built to keep your production numbers up and your owning and operating costs down. Not only does the machine's C9.3 ACERT engine meet EU Stage IV emission standards, but it does so while giving you all the power, fuel efficiency, and reliability you need to succeed.

The 340F features a Heavy Duty High Wide Undercarriage (HDHW) that absorbs stresses and provides excellent stability and durability. Additionally, the high ground clearance is ideal in rock environments, bringing the upper frame in a safer high position. Where the real power comes in is through the hydraulic system. You can literally move tons of material all day long with a great deal of speed and precision.

When you add in a quiet operator environment that keeps you comfortable and productive, ground-level service points that make your routine maintenance easy, and multiple Cat work tools that help you take on a variety of jobs, you simply won't find a better 40-ton machine.

Following are the built-in benefits and available options that make 340F an outstanding performer and an excellent choice for your line of work:



Engine

- The C9.3 ACERT engine meets EU Stage IV emission standards.
- The emissions package works behind the scenes without interrupting your job.
- Engine speed control automatically lowers rpm when the machine doesn't need it to help you save fuel.
- Two power modes – standard and eco – and automatic engine idle shutdown help you more actively manage fuel consumption.

Hydraulics

- SmartBoom™ technology reduces stress and vibrations transmitted to the machine during rock scraping, hammer work and truck loading resulting in greater productivity and fuel efficiency.
- Major hydraulic components are located close together so shorter tubes and lines can be used, leading to less friction loss, reduced pressure drops, and more power to the ground.
- The main control valve opens slowly when the range of joystick lever movement is small and opens rapidly when movement is high, putting flow where you need it when you need it for smoother operation and greater efficiency.
- Electric boom and stick regeneration keeps oil flow at the head and rod ends of the cylinders instead of going back to the tank, which results in less pressure loss for higher controllability, more productivity, and lower operating costs.
- Heavy lift mode increases machine system pressure to improve lift – a nice benefit in certain situations. Heavy lift mode also reduces engine speed and pump flow in order to improve controllability.

Contents

Key Features	2
Specifications	4
Standard Equipment	17
Optional Equipment	18
Notes	19

Key Features

Benefits to help get your work done efficiently and effectively



Cab

- The full-size roll-over protective structure (ROPS) cab is both quiet and comfortable.
- The automatic climate control system maintains consistent cab temperature.
- Joysticks, armrests, and seats adjust to your preference.
- Seats include heated and cooled options.
- The LED monitor is programmable in 42 languages.
- A drink holder, storage areas, and auxiliary power outlets are in easy-to-reach areas.



Work Tools

- Multiple Cat Work Tools – designed specifically for Cat machines – are available for a wide range of applications.
- Cat quick couplers allow you to switch from one tool to another in a matter of minutes.
- Cat tool control remembers pressures and flows for up to 10 tools that can be selected from the monitor so you can quickly get to work after each tool change.

Serviceability

- Routine maintenance items like grease points, fluid taps, filters, and drain tubes can be reached at ground level.
- Compartment doors are designed to prevent debris entry, and they securely latch in place to enhance ease of service.
- The side-by-side cooling system is efficient and easy to clean, and it is capable of being upgraded for high-ambient conditions.

Technology Options

- Product Link™/VisionLink® connects you to your machine, providing access to its location, hours, fuel consumption, idle time, events, and diagnostic codes.

Structures

- Heavy Duty Reach booms and sticks offer you all around versatility for general excavation work like multipurpose digging and loading.
- Mass Excavation boom and sticks provide higher digging forces for heavy material like rock due to special boom and stick geometry, bucket linkage, and cylinders built for greater durability.
- The upper frame is built with special mounts to support the ROPS cab.
- The lower frame is reinforced to enhance component durability.
- Track shoes, links, rollers, idlers, and final drives are built with high-tensile-strength steel.
- Grease-lubricated track link prevents dirt and debris from entering.

340F Hydraulic Excavator Specifications

Engine

Engine Model	Cat C9.3 ACERT
Gross Power – SAE J1995	238 kW (324 PS)
Power – ISO 9249 (metric)	228 kW (310 PS)
Power – ISO 14396 (metric)	234 kW (318 PS)
Bore	115 mm
Stroke	149 mm
Displacement	9.3 L

Hydraulic System

Maximum Flow	
Main System	570 L/min
Swing System	279 L/min
Pilot System	150 L/min
Auxiliary Circuit – High Pressure	29 L/min
Auxiliary Circuit – Medium Pressure	4100 L/min
Maximum Pressure	
Equipment	35 000 kPa
Equipment (heavy lift)	38 000 kPa
Travel	35 000 kPa
Swing	28 000 kPa
Pilot System	4100 kPa
Boom Cylinder	
Bore	150 mm
Stroke	1440 mm
Stick Cylinder	
Bore	170 mm
Stroke	1738 mm
B1 Bucket Cylinder	
Bore	160 mm
Stroke	1356 mm

Drive

Maximum Gradeability	30°/70%
Maximum Travel Speed	4.8 km/h
Maximum Drawbar Pull	291 kN

Swing

Swing Speed	8.8 rpm
Swing Torque	109 kN·m

Service Refill Capacities

Fuel Tank Capacity	620 L
Cooling System	43 L
Engine Oil (with filter)	32 L
Swing Drive (each)	19 L
Final Drive (each)	8 L
Hydraulic System Oil Capacity (including tank)	380 L
Hydraulic Tank Oil	175 L
DEF Tank	41 L

Track

Track Options	850 mm 700 mm 600 mm
Number of Shoes (each side)	49 pieces
Number of Track Rollers (each side)	9 pieces
Number of Carrier Rollers (each side)	2 pieces

Sound Performance

Exterior Sound Power Level – ISO 6395:2008*	106 dB(A)
Operator Sound Pressure Level – ISO 6396:2008	73 dB(A)

- Hearing protection may be needed when operating with an open operator station and cab (when not properly maintained or doors/windows open) for extended periods or in a noisy environment.
- When properly installed and maintained, the cab offered by Caterpillar, when tested with doors and windows closed according to ANSI/SAE J1166 OCT98, meets OSHA and MSHA requirements for operator sound exposure limits in effect at time of manufacture.

* As per European Union Directive 200/14/EC as amended by 2005/88/EC.

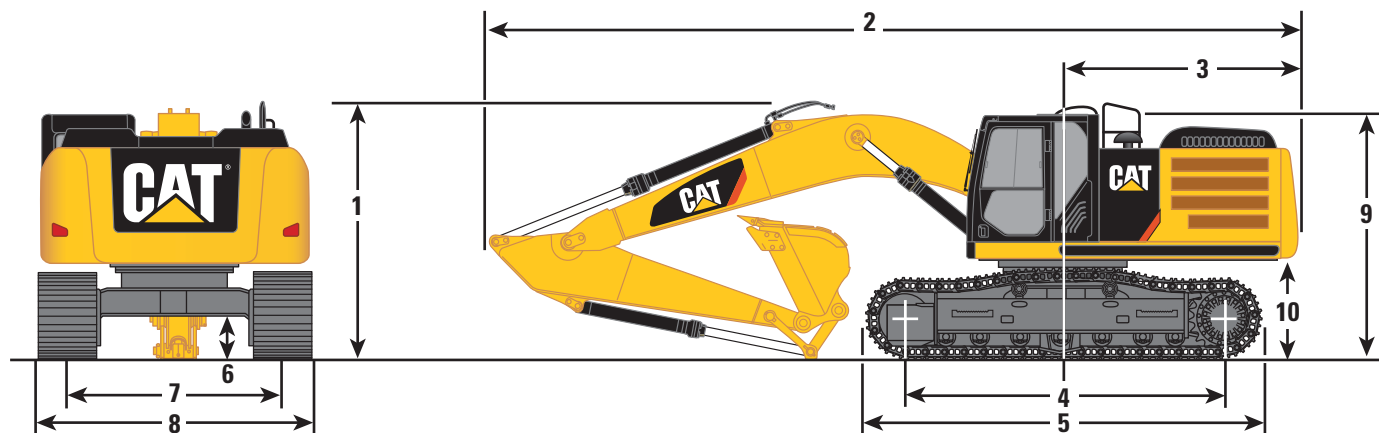
Standards

Brakes	ISO 10265:2008
Cab/FOGS	ISO 10262:1998
Cab/ROPS	ISO 12117-2 ISO 12117-2:2008
DEF	ISO 22241

340F Hydraulic Excavator Specifications

Dimensions

All dimensions are approximate.



Boom Options	Reach Boom 6.5 m		Mass Boom 6.18 m
	R3.2DB	R2.8DB	M2.55TB
Stick Options			
1 Shipping Height*	3450 mm	3690 mm	3670 mm
2 Shipping Length	11 080 mm	11 170 mm	10 840 mm
3 Tail Swing Radius	3500 mm	3500 mm	3500 mm
4 Length to Center of Rollers	4040 mm	4040 mm	4040 mm
5 Track Length	5020 mm	5020 mm	5020 mm
6 Ground Clearance**	720 mm	720 mm	720 mm
Ground Clearance*	690 mm	690 mm	690 mm
7 Track Gauge	2920 mm	2920 mm	2920 mm
8 Transport Width			
600 mm Shoes	3520 mm	3520 mm	3520 mm
700 mm Shoes	3620 mm	3620 mm	3620 mm
850 mm Shoes	3770 mm	3770 mm	3770 mm
9 Cab Height	3390 mm	3390 mm	3390 mm
Cab Height with Top Guard	3600 mm	3600 mm	3600 mm
10 Counterweight Clearance**	1450 mm	1450 mm	1450 mm
Bucket Type	GP	GP	SD
Bucket Capacity	2.28 m ³	2.28 m ³	2.41 m ³
Bucket Tip Radius	1753 mm	1753 mm	1895 mm

Dimensions may vary depending on bucket selection.

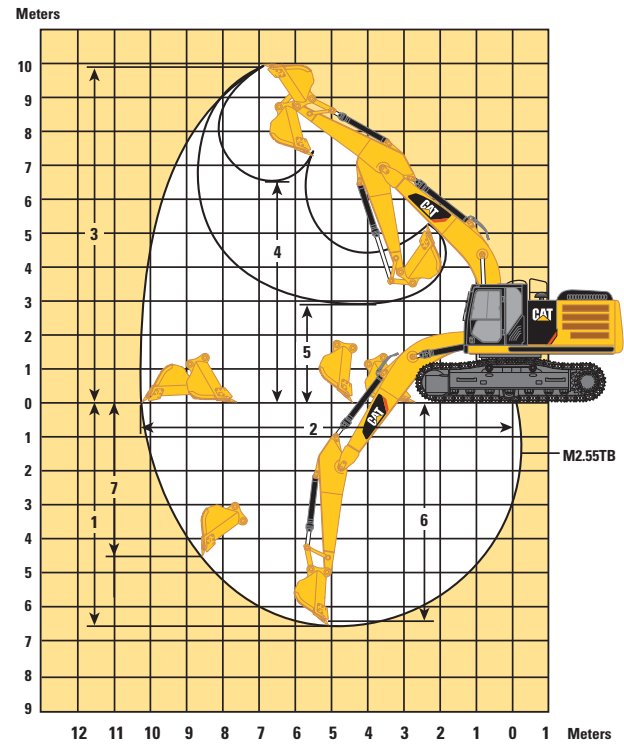
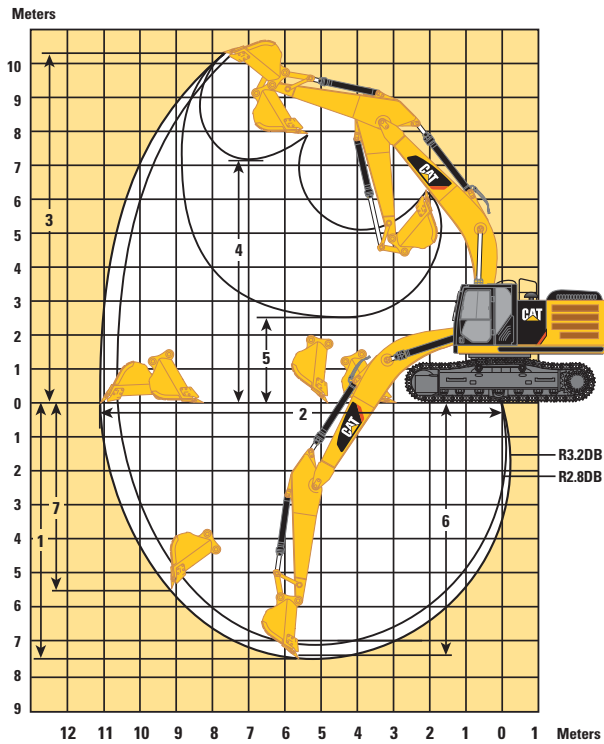
*Including shoe lug height.

**Without shoe lug height.

340F Hydraulic Excavator Specifications

Working Ranges

All dimensions are approximate.



Boom Options

Stick Options

	Reach Boom 6.5 m		Mass Boom 6.18 m
	R3.2DB	R2.8DB	M2.55TB
1 Maximum Digging Depth	7480 mm	7080 mm	6650 mm
2 Maximum Reach at Ground Level	11 020 mm	10 710 mm	10 260 mm
3 Maximum Cutting Height	10 310 mm	10 370 mm	9970 mm
4 Maximum Loading Height	7110 mm	7110 mm	6610 mm
5 Minimum Loading Height	2610 mm	3010 mm	2920 mm
6 Maximum Depth Cut for 2440 mm Level Bottom	7330 mm	6920 mm	6470 mm
7 Maximum Vertical Wall Digging Depth	5620 mm	5580 mm	4640 mm
Bucket Digging Force (ISO)	209.7 kN	209.7 kN	261.3 kN
Stick Digging Force (ISO)	165.9 kN	184.6 kN	190.2 kN
Bucket Type	GP	GP	SD
Bucket Capacity	2.28 m ³	2.28 m ³	2.41 m ³
Bucket Tip Radius	1753 mm	1753 mm	1895 mm

Dimensions may vary depending on bucket selection.

340F Hydraulic Excavator Specifications

Operating Weights and Ground Pressures

Boom	Stick	Bucket	850 mm Shoes (triple grouser)		700 mm Shoes (triple grouser)		600 mm Shoes (triple grouser)		600 mm Shoes (double grouser)	
			Weight kg	Ground Pressure kPa	Weight kg	Ground Pressure kPa	Weight kg	Ground Pressure kPa	Weight kg	Ground Pressure kPa
R6.5 m	R3.2DB	2.28 m ³	41 500	54.6	40 400	64.5	40 200	74.9	41 000	76.4
R6.5 m	R2.8DB	2.28 m ³	41 400	54.4	40 400	64.5	40 100	74.7	41 000	76.4
M6.18 m	M2.55TB	2.41 m ³	42 800	56.3	41 700	66.6	41 500	77.3	42 300	78.8

Major Component Weights

	kg
Base Machine (with boom cylinder, without counterweight, front linkage and track)	20 800
Counterweight	
7.0 mt	7000
Boom (includes lines, pins and stick cylinder)	
Reach Boom – 6.5 m	4400
Mass Boom – 6.18 m	4400
Stick (includes lines, pins, bucket cylinder and bucket linkage)	
R3.2DB	1900
R2.8DB	1800
M2.55TB	2100
Track Shoes (per two tracks)	
850 mm triple grouser	5400
700 mm triple grouser	4300
600 mm triple grouser	4100
600 mm double grouser	4900
Buckets	
2.28 m ³	1500
2.41 m ³	2500

All weights are rounded up to nearest 10 kg except for buckets.

Base machine includes 75 kg operator weight, 90% fuel weight and undercarriage with center guard.

340F Hydraulic Excavator Specifications

Bucket Specifications and Compatibility

	Linkage	Width	Capacity	Weight	Fill	Reach Boom		Mass Boom
		mm	m ³	kg	%	R3.2DB	R2.8DB	M2.55TB
Without Quick Coupler								
General Duty (GD)	DB	1350	1.64	1173	100	●	●	
	DB	1650	2.11	1352	100	●	●	
	DB	1800	2.35	1453	100	●	●	
	TB	1500	2.14	1872	100			●
	TB	1650	2.41	2027	100			●
Heavy Duty (HD)	DB	1350	1.64	1481	100	●	●	
	DB	1500	1.88	1600	100	●	●	
	DB	1650	2.12	1730	100	●	●	
	TB	1650	2.41	2210	100			●
	TB	1750	2.60	2240	100			●
	TB	1800	2.69	2381	100			⊙
Severe Duty (SD)	DB	1650	2.14	1827	90	●	●	
	TB	1350	1.87	2065	90			●
	TB	1650	2.41	2385	90			●
Maximum load pin on (payload + bucket)					kg	6791	6820	7566
With Pin Grabber Coupler								
General Duty (GD)	DB	1350	1.64	1173	100	●	●	
	DB	1650	2.11	1352	100	●	●	
	DB	1800	2.35	1453	100	●	●	
	TB	1500	2.14	1872	100			●
	TB	1650	2.41	2027	100			●
Heavy Duty (HD)	DB	1350	1.64	1481	100	●	●	
	DB	1500	1.88	1600	100	●	●	
	DB	1650	2.12	1730	100	●	●	
	TB	1650	2.41	2210	100			⊙
	TB	1750	2.60	2240	100			⊙
	TB	1800	2.69	2381	100			⊙
Severe Duty (SD)	DB	1650	2.15	1827	90	●	●	
	TB	1350	1.87	2065	90			●
	TB	1650	2.41	2385	90			●
Maximum load with coupler (payload + bucket)					kg	6233	6262	7008

Maximum Material Density

- 2100 kg/m³
- ⊙ 1800 kg/m³

Capacity based on ISO 7451.

Bucket weight with General Duty tips.

Caterpillar recommends using appropriate work tools to maximize the value customers receive from our products. Use of work tools, including buckets, which are outside of Caterpillar's recommendations or specifications for weight, dimensions, flows, pressures, etc. may result in less-than-optimal performance, including but not limited to reductions in production, stability, reliability, and component durability. Improper use of a work tool resulting in sweeping, prying, twisting and/or catching of heavy loads will reduce the life of the boom and stick.

340F Hydraulic Excavator Specifications

Bucket Specifications and Compatibility

	Linkage	Width	Capacity	Weight	Fill	Reach Boom		Mass Boom
		mm	m ³	kg	%	R3.2DB	R2.8DB	M2.55TB
With Quick Coupler (CW45, CW45s)								
General Duty (GD)	DB	1050	1.17	986	100	●	●	
	DB	1200	1.40	1064	100	●	●	
	DB	1350	1.64	1143	100	●	●	
	DB	1500	1.87	1245	100	●	●	
	DB	1650	2.11	1324	100	●	●	
Heavy Duty (HD)	DB	1350	1.64	1417	100	●	●	
	DB	1500	1.88	1514	100	●	●	
	DB	1650	2.12	1647	100	●	●	
	TB	1650	2.41	2117	100			●
Severe Duty (SD)	DB	1050	1.17	1272	90	●	●	
	DB	1650	2.15	1802	90	●	●	
	TB	1350	1.87	1974	90			●
	TB	1650	2.41	2295	90			●
Maximum load with coupler (payload + bucket)					kg	6301	6330	7076

Capacity based on ISO 7451.

Bucket weight with General Duty tips.

Maximum Material Density

● 2100 kg/m³

Caterpillar recommends using appropriate work tools to maximize the value customers receive from our products. Use of work tools, including buckets, which are outside of Caterpillar's recommendations or specifications for weight, dimensions, flows, pressures, etc. may result in less-than-optimal performance, including but not limited to reductions in production, stability, reliability, and component durability. Improper use of a work tool resulting in sweeping, prying, twisting and/or catching of heavy loads will reduce the life of the boom and stick.

340F Hydraulic Excavator Specifications

Work Tool Offering Guide*

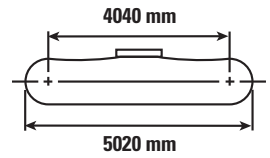
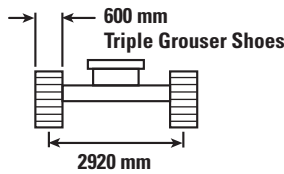
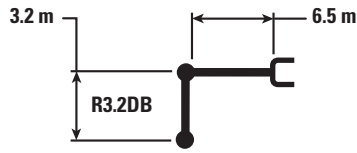
Boom Options	Reach Boom		Mass Boom
Stick Options	R3.2	R2.8	M2.55
Hydraulic Hammer	H140E s H160E s H180E s	H140E s H160E s H180E s	H140E s H160E s H180E s
Multi-Processor	MP30 CC Jaw MP30 CR Jaw MP30 PP Jaw MP30 PS Jaw MP30 S Jaw MP30 TS Jaw	MP30 CC Jaw MP30 CR Jaw MP30 PP Jaw MP30 PS Jaw MP30 S Jaw MP30 TS Jaw	MP30 CC Jaw MP30 CR Jaw MP30 PP Jaw MP30 PS Jaw MP30 S Jaw MP30 TS Jaw
Pulverizer	P235	P235	P235
Crusher	P335	P335	P335
Demolition and Sorting Grapple	G325B-D/R G330	G325B-D/R G330	G330
Mobile Scrap and Demolition Shear	S340B S365C	S340B S365C	S340B S365C
Compactor (Vibratory Plate)	CVP110	CVP110	CVP110
Orange Peel Grapple			
Dedicated Quick Coupler	CW-45 CW-45S		

These work tools are available for the 340F.
Consult your Cat dealer for proper match.

*Offerings not available in all areas. Matches are dependent on excavator configurations. Consult your Cat dealer to determine what is offered in your area and for proper work tool match.

340F Hydraulic Excavator Specifications

Reach Boom Lift Capacities – Counterweight: 7.0 mt – with Bucket – Heavy Lift On



Reach (mm)	Unit	3000 mm		4500 mm		6000 mm		7500 mm		9000 mm		mm		
		Diagram 1	Diagram 2	Diagram 1	Diagram 2	Diagram 1	Diagram 2	Diagram 1	Diagram 2	Diagram 1	Diagram 2	Diagram 1	Diagram 2	
9000 mm	kg											*3200	*3200	7790
7500 mm	kg							*5850	*5850			*4050	*4050	8790
6000 mm	kg							*7350	*7350	*6200	*6200	*4850	*4850	9410
4500 mm	kg					*9450	*9450	*8100	*8100	*7350	6050	*5150	*5150	9750
3000 mm	kg			*16 450	*16 450	*11 350	*11 350	*9050	8050	*7850	5900	*5650	5000	9840
1500 mm	kg			*12 350	*12 350	*12 950	10 900	*9950	7700	8150	5700	*6200	4900	9790
0 mm	kg			*15 650	*15 650	*13 800	10 500	*10 550	7450	8000	5550	*6900	5000	9590
-1500 mm	kg	*10 500	*10 500	*18 550	16 550	*13 800	10 400	10 600	7350	7950	5550	7800	5400	9130
-3000 mm	kg	*20 750	*20 750	*16 950	16 750	*12 900	10 400	*9900	7350			*8300	6250	8370
-4500 mm	kg	*17 900	*17 900	*14 050	*14 050	*10 800	10 650					*8200	8100	7190



ISO 10567



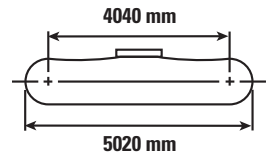
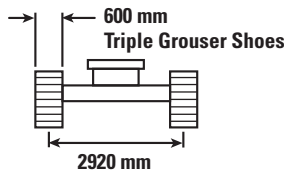
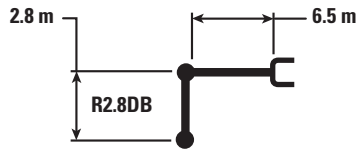
*Indicates that the load is limited by hydraulic lifting capacity rather than tipping load. The above loads are in compliance with hydraulic excavator lift capacity standard ISO 10567:2007. They do not exceed 87% of hydraulic lifting capacity or 75% of tipping load. Weight of all lifting accessories must be deducted from the above lifting capacities. Lifting capacities are based on the machine standing on a firm, uniform supporting surface. The use of a work tool attachment point to handle/lift objects, could affect the machine lift performance.

Lift capacity stays with $\pm 5\%$ for all available track shoes.

Always refer to the appropriate Operation and Maintenance Manual for specific product information.

340F Hydraulic Excavator Specifications

Reach Boom Lift Capacities – Counterweight: 7.0 mt – with Bucket – Heavy Lift On



Reach (mm)	Unit	3000 mm		4500 mm		6000 mm		7500 mm		9000 mm		mm		
9000 mm	kg											*3050	*3050	7430
7500 mm	kg							*5300	*5300			*3800	*3800	8480
6000 mm	kg							*7800	*7800			*4900	*4900	9130
4500 mm	kg			*13 400	*13 400	*10 050	*10 050	*8500	8300	*7700	6050	*6450	5500	9480
3000 mm	kg					*11 900	11 350	*9400	7950	*8100	5850	*7000	5250	9580
1500 mm	kg					*13 300	10 800	*10 250	7650	8150	5700	7450	5200	9490
0 mm	kg					*13 900	10 500	*10 700	7450	8050	5600	7650	5350	9290
-1500 mm	kg			*18 050	16 650	*13 700	10 400	*10 550	7400			8300	5800	8810
-3000 mm	kg	*20 000	*20 000	*16 150	*16 150	*12 550	10 500	*9550	7450			*8450	6800	8010
-4500 mm	kg			*12 900	*12 900	*9900	*9900					*8050	*8050	6760



ISO 10567



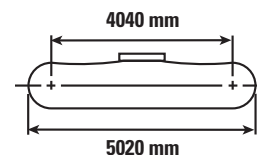
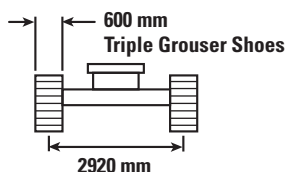
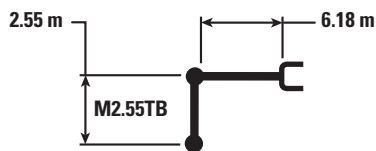
*Indicates that the load is limited by hydraulic lifting capacity rather than tipping load. The above loads are in compliance with hydraulic excavator lift capacity standard ISO 10567:2007. They do not exceed 87% of hydraulic lifting capacity or 75% of tipping load. Weight of all lifting accessories must be deducted from the above lifting capacities. Lifting capacities are based on the machine standing on a firm, uniform supporting surface. The use of a work tool attachment point to handle/lift objects, could affect the machine lift performance.

Lift capacity stays with $\pm 5\%$ for all available track shoes.

Always refer to the appropriate Operation and Maintenance Manual for specific product information.

340F Hydraulic Excavator Specifications

Mass Boom Lift Capacities – Counterweight: 7.0 mt – with Bucket – Heavy Lift On



Reach (mm)	Unit	3000 mm		4500 mm		6000 mm		7500 mm		mm		
		Diagram	Diagram	Diagram	Diagram	Diagram	Diagram	Diagram	Diagram	Diagram	Diagram	
7500 mm	kg									*5350	*5350	7520
6000 mm	kg					*8100	*8100	*7350	*7350	*5450	*5450	8260
4500 mm	kg			*13 200	*13 200	*9600	*9600	*7950	7500	*5500	5350	8830
3000 mm	kg					*11 350	10 500	*8800	7150	*5750	4900	9110
1500 mm	kg					*12 650	9950	*9500	6850	*6250	4800	9110
0 mm	kg			*15 600	*15 600	*12 950	9700	*9750	6650	*7000	4950	8860
-1500 mm	kg			*16 250	16 000	*12 350	9650	*9350	6600	*7800	5550	8320
-3000 mm	kg	*16 650	*16 650	*13 750	*13 750	*10 650	9850			*7600	6950	7410
-4500 mm	kg									*6750	*6750	5820



ISO 10567



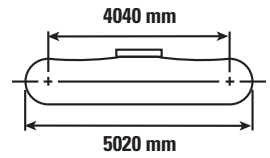
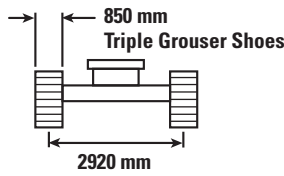
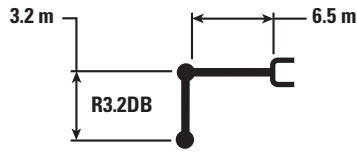
*Indicates that the load is limited by hydraulic lifting capacity rather than tipping load. The above loads are in compliance with hydraulic excavator lift capacity standard ISO 10567:2007. They do not exceed 87% of hydraulic lifting capacity or 75% of tipping load. Weight of all lifting accessories must be deducted from the above lifting capacities. Lifting capacities are based on the machine standing on a firm, uniform supporting surface. The use of a work tool attachment point to handle/lift objects, could affect the machine lift performance.

Lift capacity stays with ±5% for all available track shoes.

Always refer to the appropriate Operation and Maintenance Manual for specific product information.

340F Hydraulic Excavator Specifications

Reach Boom Lift Capacities – Counterweight: 7.0 mt – without Bucket – Heavy Lift On



Reach (mm)	Unit	3000 mm		4500 mm		6000 mm		7500 mm		9000 mm		mm		
		Diagram	Diagram	Diagram	Diagram	Diagram	Diagram	Diagram	Diagram	Diagram	Diagram	Diagram	Diagram	
9000 mm	kg											*7900	*7900	6610
7500 mm	kg							*8700	*8700			*7350	*7350	7860
6000 mm	kg							*8900	*8900			*7200	*7200	8690
4500 mm	kg			*14 000	*14 000	*11 050	*11 050	*9600	9450	*8850	7150	*7300	6900	9190
3000 mm	kg			*17 500	*17 500	*12 750	12 600	*10 500	9150	*9250	7000	*7600	6500	9430
1500 mm	kg			*19 750	18 250	*14 150	12 050	*11 300	8850	9350	6850	*8200	6400	9420
0 mm	kg			*20 350	17 850	*14 900	11 700	*11 750	8600	9250	6750	9000	6550	9170
-1500 mm	kg	*15 250	*15 250	*19 800	17 800	*14 850	11 600	*11 700	8550			9750	7100	8650
-3000 mm	kg	*23 650	*23 650	*18 150	17 950	*13 850	11 650	*10 650	8600			*10 000	8200	7810
-4500 mm	kg	*19 850	*19 850	*15 050	*15 050	*11 300	*11 300					*10 000	*10 000	6520



ISO 10567



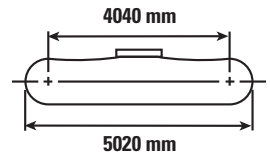
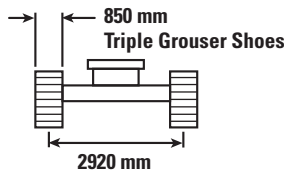
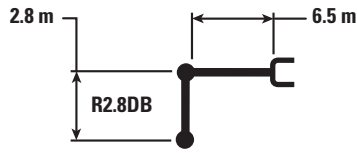
*Indicates that the load is limited by hydraulic lifting capacity rather than tipping load. The above loads are in compliance with hydraulic excavator lift capacity standard ISO 10567:2007. They do not exceed 87% of hydraulic lifting capacity or 75% of tipping load. Weight of all lifting accessories must be deducted from the above lifting capacities. Lifting capacities are based on the machine standing on a firm, uniform supporting surface. The use of a work tool attachment point to handle/lift objects, could affect the machine lift performance.

Lift capacity stays with $\pm 5\%$ for all available track shoes.

Always refer to the appropriate Operation and Maintenance Manual for specific product information.

340F Hydraulic Excavator Specifications

Reach Boom Lift Capacities – Counterweight: 7.0 mt – without Bucket – Heavy Lift On



		3000 mm		4500 mm		6000 mm		7500 mm		9000 mm		mm		
9000 mm	kg											*9850	*9850	6170
7500 mm	kg											*9300	*9300	7500
6000 mm	kg					*10 200	*10 200	*9400	*9400			*9000	8050	8360
4500 mm	kg			*15 000	*15 000	*11 650	*11 650	*10 000	9400			*9050	7250	8880
3000 mm	kg			*18 400	*18 400	*13 250	12 450	*10 800	9100	9500	6950	9300	6800	9130
1500 mm	kg			*16 850	*16 850	*14 500	12 000	*11 500	8800	9350	6850	9200	6700	9120
0 mm	kg			*20 300	17 850	*15 000	11 700	*11 850	8650			9500	6900	8860
-1500 mm	kg	*14 700	*14 700	*19 400	17 900	*14 750	11 650	*11 600	8600			*10 100	7500	8320
-3000 mm	kg	*22 850	*22 850	*17 450	*17 450	*13 450	11 750					*10 200	8800	7440
-4500 mm	kg			*13 800	*13 800	*10 000	*10 000					*9800	*9800	6070



ISO 10567



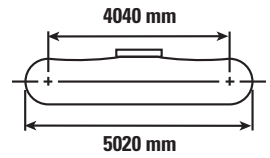
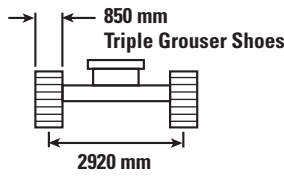
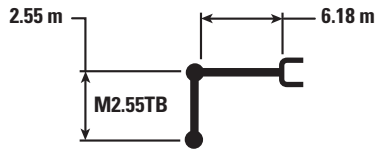
*Indicates that the load is limited by hydraulic lifting capacity rather than tipping load. The above loads are in compliance with hydraulic excavator lift capacity standard ISO 10567:2007. They do not exceed 87% of hydraulic lifting capacity or 75% of tipping load. Weight of all lifting accessories must be deducted from the above lifting capacities. Lifting capacities are based on the machine standing on a firm, uniform supporting surface. The use of a work tool attachment point to handle/lift objects, could affect the machine lift performance.

Lift capacity stays with $\pm 5\%$ for all available track shoes.

Always refer to the appropriate Operation and Maintenance Manual for specific product information.

340F Hydraulic Excavator Specifications

Mass Boom Lift Capacities – Counterweight: 7.0 mt – without Bucket – Heavy Lift On



Boom Length	Unit	3000 mm		4500 mm		6000 mm		7500 mm		mm		
		Diagram 1	Diagram 2	Diagram 1	Diagram 2	Diagram 1	Diagram 2	Diagram 1	Diagram 2	Diagram 1	Diagram 2	
7500 mm	kg					*10 150	*10 150			*9000	*9000	6770
6000 mm	kg					*10 650	*10 650	*9900	9350	*8650	*8650	7710
4500 mm	kg			*15 150	*15 150	*11 850	*11 850	*10 300	9150	*8700	7850	8280
3000 mm	kg			*18 300	*18 300	*13 300	12 250	*10 950	8900	*9050	7350	8540
1500 mm	kg			*20 000	17 900	*14 450	11 800	*11 500	8650	*9800	7200	8530
0 mm	kg			*19 950	17 650	*14 800	11 550	*11 650	8450	10 350	7450	8250
-1500 mm	kg	*19 650	*19 650	*18 800	17 700	*14 250	11 500	*10 950	8500	*10 600	8250	7670
-3000 mm	kg	*21 050	*21 050	*16 300	*16 300	*12 400	11 650			*10 500	10 100	6700



ISO 10567



*Indicates that the load is limited by hydraulic lifting capacity rather than tipping load. The above loads are in compliance with hydraulic excavator lift capacity standard ISO 10567:2007. They do not exceed 87% of hydraulic lifting capacity or 75% of tipping load. Weight of all lifting accessories must be deducted from the above lifting capacities. Lifting capacities are based on the machine standing on a firm, uniform supporting surface. The use of a work tool attachment point to handle/lift objects, could affect the machine lift performance.

Lift capacity stays with $\pm 5\%$ for all available track shoes.

Always refer to the appropriate Operation and Maintenance Manual for specific product information.

Standard Equipment

Standard equipment may vary. Consult your Cat dealer for details.

ENGINE

- Cat C9.3 ACERT diesel engine
- Biodiesel capable, up to B20
- Meets EU Stage IV emission standards
- 2300 m altitude capability
- Electric priming pump with switch
- Automatic engine speed control
- Standard, economy and high power modes
- Water separator in fuel line including water level sensor and indicator
- Air cleaner
- Radial seal air filter
- Side-by-side cooling system
- Primary filter with water separator and water separator indicator switch
- Fuel differential indicator switch in fuel line

HYDRAULIC SYSTEM

- Reverse swing dampening valve
- Automatic swing parking brake
- High-performance hydraulic return filter
- Regeneration circuit for boom and stick
- Capability of installing additional auxiliary circuits
- Up to B20 bio oil capable

COUNTERWEIGHT

- 7.0 mt

CAB

- Parallel wiper and washer
- Mirrors
- Pressurized operator station with positive filtration
- Laminated glass front upper window and tempered other windows
- Sliding upper door window (left-hand cab door)
- Removable lower windshield within cab storage bracket
- Openable skylight
- Interior
 - Glass-breaking safety hammer
 - Coat hook
 - Beverage holder
 - Literature holder
 - Interior lighting
 - AM/FM radio mounting (DIN size)
 - Two 12V stereo speakers
 - Storage shelf suitable for lunch or toolbox
 - Power supply with 12V, two power outlets (10 amp)
 - Thumbwheel modulation joystick for use with combined auxiliary control
 - Sunscreen
 - Air conditioner, heater and defroster with climate control
- Seat
 - Seatbelt, 51 mm
 - Adjustable armrest
 - Height adjustable joystick consoles
 - Neutral lever (lock out) for all controls
 - Travel control pedals with removable hand levers
 - Capability of installing two additional pedals
 - Two speed travel
 - Floor mat, washable
- Monitor
 - Clock
 - Video ready
 - Color LCD display with warning, filter/fluid change, and working hour information
 - Language display (full graphic and full color display)
 - Machine condition, error code and tool mode setting information
 - Start-up level check for engine oil, engine coolant and hydraulic oil
 - Warning, filter/fluid change and working hour information
 - Fuel consumption meter

UNDERCARRIAGE

- Long and heavy-duty high wide undercarriage
- Grease Lubricated Track with PPR2
- Heavy-duty track rollers and idlers
- Towing eye on base frame
- Swivel guard
- Heavy-duty travel motor guard
- Heavy-duty bottom guard

ELECTRICAL

- 80 amp alternator
- Circuit breaker
- Standard battery

LIGHTS

- Cab and boom lights with time delay
- Exterior lights integrated into storage box

SAFETY AND SECURITY

- Cat one key security system
- Door locks
- Cap locks on fuel and hydraulic tanks
- Lockable external tool/storage box
- Signaling/warning horn
- Secondary engine shutoff switch
- Mirrors
- Rear vision camera
- Capability to connect a beacon
- Bolt on FOGS capability
- Safety hammer for breaking cab glass

INTEGRATED TECHNOLOGIES

- Product Link
- Rear vision camera

340F Optional Equipment

Optional Equipment

Optional equipment may vary. Consult your Cat dealer for details.

FRONT LINKAGE

- HD Reach boom 6.5 m (with BLCV/SLCV/SmartBoom)
 - R3.2DB stick
 - R2.8DB stick
- Mass boom 6.18 m (with BLCV/SLCV/SmartBoom)
 - M2.55TB stick
- Bucket linkage
 - DB family (with lifting eye)
 - TB family (with lifting eye)
- CW dedicated quick coupler

TRACK

- 850 mm triple grouser
- 700 mm triple grouser
- 600 mm triple grouser HD
- 600 mm double grouser

GUARDS

- Track guiding guards
 - Full length
 - Center section

LIGHTS

- Cab working lights, halogen

CAB

- Cab front rain protector
- Windshield
 - 70-30 split, sliding, removable lower windshield with in cab storage bracket
 - One-piece, fixed

HYDRAULIC SYSTEM

- HP hydraulic lines for boom and stick
- MP hydraulic lines for boom and stick
- QC hydraulic lines for boom and stick
- QC control
- Up to B20 bio hydraulic oil

ELECTRICAL

- Cold weather starting package, 240V, –32° C
- Electric refueling pump with auto shut off, and storage box

ENGINE

- Quick drains, engine and hydraulic oil (QuickEvac™)
- Fast fill port for fuel

For more complete information on Cat products, dealer services, and industry solutions, visit us on the web at www.cat.com

AEHQ7518 (08-2015)
(EU)

© 2015 Caterpillar
All rights reserved

Materials and specifications are subject to change without notice. Featured machines in photos may include additional equipment. See your Cat dealer for available options.

CAT, CATERPILLAR, SAFETY.CAT.COM, their respective logos, "Caterpillar Yellow" and the "Power Edge" trade dress, as well as corporate and product identity used herein, are trademarks of Caterpillar and may not be used without permission.

