

**Cat® Electric Power**

**Cat Rental  
Power Solutions**

Gareth Osborne  
Stephen Hayward  
Carl Emery



**BUILT FOR IT.™**



**Cat® Electric Power**

**XQP Rental  
Products**



**BUILT FOR IT.™**



## Why Rent

- Urgency of need
- Duration of need and the application
- Total cost of ownership
- Risks and uncertainties
- Availability of equipment
- Flexibility
- Try before you buy
- Turnkey service
- Hidden costs
- Value of asset
- Installation costs/issues
- Financial implications



Cat® Electric Power



## Rental Product List

### • Current (XQE)

- XQE20 - Available
- XQE30 - Available
- XQE60 - Available
- XQE100 - Available



### • New (XQP)

- XQP20 - 2017
- XQP30 - 2017
- XQP60 - 2017
- XQP100 - Q4 16
- XQP150 - Available
- XQP275 - Available
- XQP300 - Available
- XQP400 - 2017
- XQP500 - Available
- XQP1100 - Q1 17

Cat® Electric Power



## 'Rental Ready' Features <XQP150

### Socket Box

CE or Clipsal options available for connection to distribution

### Control Panel

Sound isolated for operator comfort and low noise

### Enclosure

- Robust galvanised design with improved environmental protection
- Spark arresting silencer

### Serviceability

Excellent customer access for servicing and maintenance

### Digital Controls

- EMCP 4.2B
- Common panel design for compact product 60-150kVA
- Simple Speed switching (50/60Hz)
- 4 pole breaker as standard

### Alternator

CIP protection Integrated Voltage Regulator (IVR)

### Customer Connection

Robust connection point with excellent load cable access

### Baseframe

- Robust dual wall tank design.
- 24 Hrs Run time
- 110% bund containment.
- Drag bars & fork pockets

## 'Rental Ready' Features >XQP275

### Lifting Arch

Tested to 4G including all onboard liquids

### Enclosure

- Robust design with galvanised steel
- Excellent service access
- Sound isolated control and distribution area for operator protection

### Exhaust System

Spark arresting certified generator set

### Controls

- EMCP 4.2B including new rental features
- Optional Synchronising Controllers:
- EMCP 4.4, DEIF AGC4 and ComAp IntelliGen
- Simple Speed switching (50/60Hz)

### Fan

Variable-speed, controlled via ECM depending on operating conditions

### EMC

EMC Certified

### Distribution

Robust connection point with excellent load cable access. Door includes viewing window and safety cut off.

### Alternator

CIP protection as standard Class H temperature rise

### Baseframe

- Single wall 9hr tank
- Dual wall 12hr tank
- 110% bund capacity
- Forklift pockets and drag points

**Cat® Electric Power**

# Equipment Management Solutions

Steve Hayward & Carl Emery











**BUILT FOR IT.**





## What is Equipment Management Solutions

Connects your assets and provides real time information which can be used to manage your fleet and operations remotely

 <p><b>EQUIPMENT MANAGEMENT</b></p> <p><i>Provides asset tracking, utilization and management of the assets</i></p>	 <p><b>PRODUCTIVITY</b></p> <p><i>Enables the management of production / generation to customer-specified targets.</i></p>	 <p><b>SAFETY</b></p> <p><i>Increase safety at your operations</i></p>	 <p><b>SUSTAINABILITY</b></p> <p><i>Enables you to more easily comply with regulatory requirements &amp; get more from scarce resources.</i></p>
--	---	---	--

Cat® Electric Power





## Hardware

- We can provide a number of different hardware options either direct from our factory or retrofitted at a later date to any Cat® equipment



Ethernet Connection



Satellite Radio Connection



Cellular Radio Connection

- Expanded coverage / roaming, high band width & low latency
- Simple, low cost connectivity
- Enhanced asset data

Cat® Electric Power



## Software

- A number of software options available based on customer requirements supported on web and mobile platforms.
  - Monitor the status and location of equipment
  - Manage preventive maintenance work
  - Create reports to analyze the condition and performance of equipment



Cat® Electric Power



## Value Add to Equipment Management



- Asset Tracking
  - Real Time GPS, Advanced GPS services such as Geo-fencing
- Asset Utilization
  - Load profile of asset, ensuring correct sizing of customer requirement
  - Track idle assets and recommend customer solutions
  - Fuel consumption data and ensure fuel delivered when needed
- Management of the Assets
  - Dovetail our system directly into the dealers business system leading to paperless and automatic billing
  - Fleet assessment services for recommending best practices on ownership

Cat® Electric Power



## Value Add for Productivity



- Maximizing Uptime
  - Planned maintenance based on real hours run and not predicted hours
  - Remote start / stop feature
  - Early Warning of Potential Issues
    - Fault codes forwarded text or email to multiple sources
    - Engineers arrive at site with good knowledge of potential issue with correct parts and tools minimizing downtime

Cat® Electric Power



## Value Add for Safety



- Increase safety at your operations, including a range of capabilities designed to assist the operator
  - System can connect to customers systems via multiple I/O, such as CO2 fire suppression systems in event of fire
  - Early warning of potential generator failure
  - Remote start / stop feature
  - Hardware is battery backup so continues to monitor even if main battery fails

Cat® Electric Power



## Value Add for Sustainability



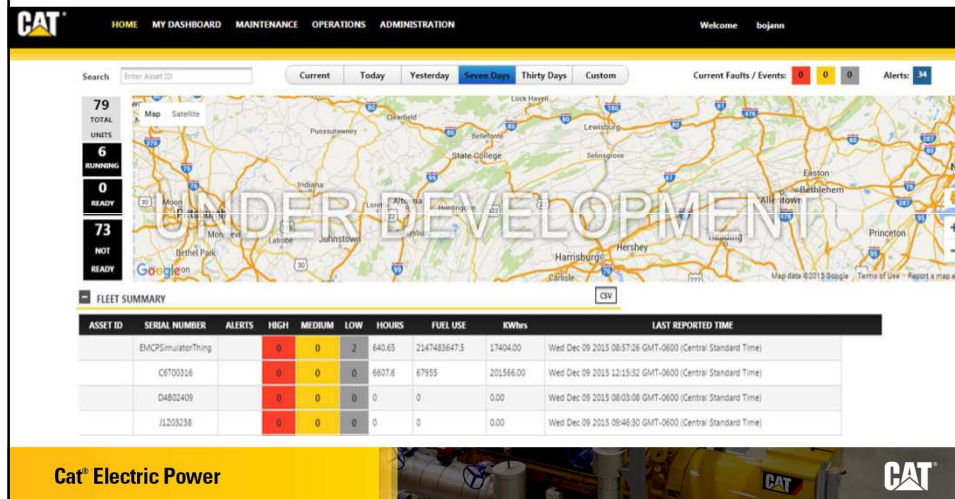
- Comply with regulatory requirements
  - Reporting and optimized operations to reduce greenhouse gas and emissions, services for obsolescence management
- Sustainability
  - System is retrofitable and can be transferred to other assets
  - System is easily integrated into customers systems eliminating need for multiple devices

Cat® Electric Power

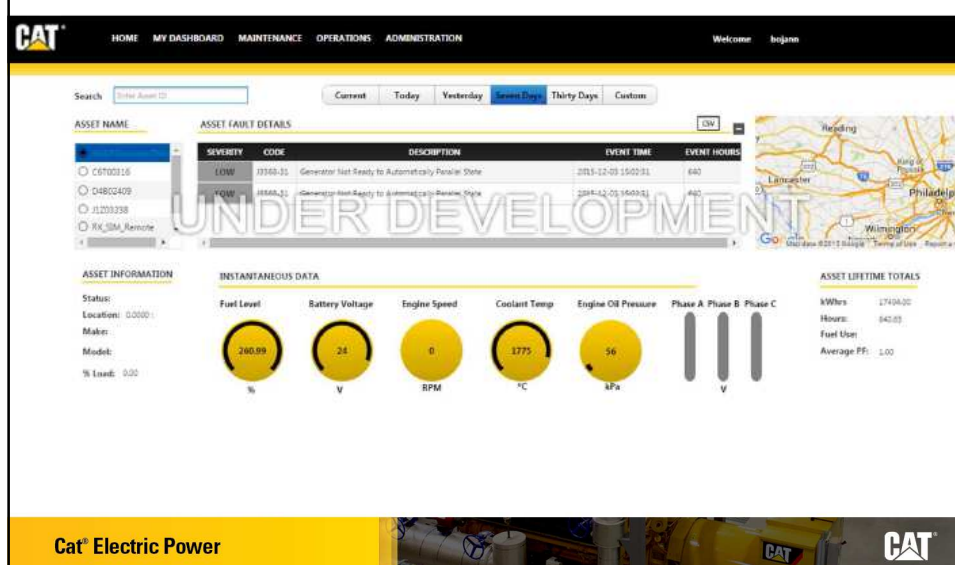


## Dashboards

- Fleet View Screen (Home)

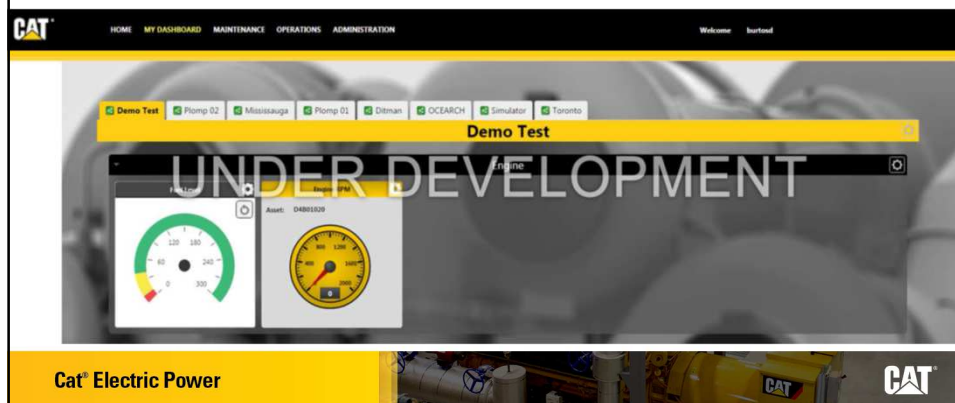


## Asset Detail Screen



## User customizable screens

Customizable dashboard to show the most important information that can be customized by each user for their own preferences



# Thank You

# Questions?

**BUILT FOR IT.**

©2016 Caterpillar  
All rights reserved.

CAT, CATERPILLAR, BUILT FOR IT, their respective logos, "Caterpillar Yellow", the "Power Edge" trade dress as well as corporate and product identity used herein, are trademarks of Caterpillar and may not be used without permission.

